

ZJX-3A剪断销信号装置说明书

1、概述

ZJX-3剪断销信号装置，以下简称产品，用于水轮机保护中，当水轮机某个剪断销剪断时，其中的信号器销体及导线同时被剪断，本产品随之动作，因而使信号系统发出剪断裂信号。

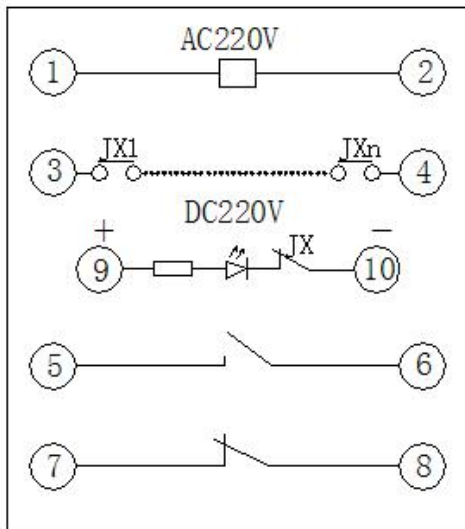
2、结构

- a. 产品由变压器、整流桥、滤波器、小型密封继电器等组成
- b. 产品全部元件装在CJ-1型通用壳体内，机芯可以抽出。外壳按使用要求有嵌入式、凸出式安装方式，有前接线及后接线。继电器的外壳为黑色胶木，盖子为透明有机玻璃，可以清楚地观察到继电器的信号指示灯。
- c. 外形及安装开孔尺寸见附图A11K、A11P、A11Q、A11H

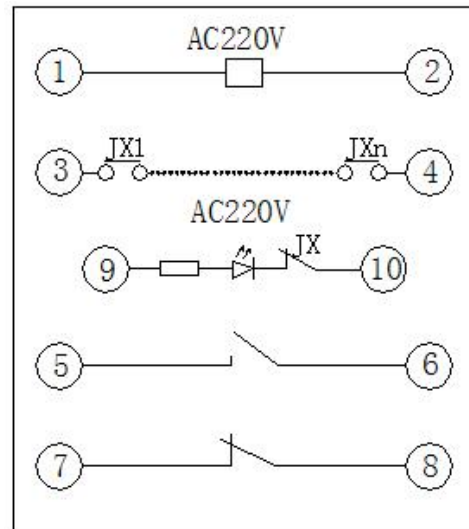
3、技术性能参数

- 3.1 输入交流额定电压AC220V
- 3.2 信号输入额定电压AC220V、AC110V、AC48V 或DC220V、DC110V、DC48V
- 3.3 产品的动作电压不大于输入交流额定电压的85%
- 3.4 在输入交流额定电压下，产品的动作时间不大于30ms
- 3.5 在输入交流额定电压下，产品的功率消耗不大于5VA

4、继电器内部原理接线图



ZJX-3A/1



ZJX-3A/2

5、调试方法

- 5.1 在额定电压下，先短接接线端子3、4，继电器不动作，然后开路端子3、4，继电器动作。
- 5.2 在装置动作电压不大于85%额定电压时重复5.1项。
- 5.3 装置输入交流电压下降到100V后，信号指示灯可靠显示。

外形及安装开孔尺寸见附图：

<p>Technical drawing of model A11Q. It includes three views: a front view showing a rectangular component with a width of 105 and a height of 125, with a total height of 149; a side view showing a depth of 156 and a height of 115; and a detail view of a hole with a diameter of 5mm, with two such holes (2x Ø5) spaced 133mm apart.</p>	<p>A11Q</p>
<p>Technical drawing of model A11H. It includes three views: a front view showing a width of 72 and a height of 115; a side view showing a total width of 128, with a 61.5mm section and an 8.5mm section, and a height of 115; and a detail view showing a 16mm wide top section, a 65mm wide bottom section, and a height of 107.5mm, with a 105mm wide section in the middle.</p>	<p>A11H</p>
<p>Technical drawing of model A11K. It includes three views: a front view showing a width of 72 and a height of 115; a side view showing a total width of 122.5, with a 100.5mm section and an 88.5mm section, and a height of 115; and a detail view showing a 16mm wide top section, a 65mm wide bottom section, and a height of 107.5mm, with a 105mm wide section in the middle.</p>	<p>A11K</p>